



**A
BETTER
CITY**



MEMBER BROCHURE

OUR MISSION: A Better City represents a multi-sector group of nearly 130 business leaders united around a common goal: to enhance the Greater Boston region's economic health, competitiveness, equitable growth, sustainability, and quality of life for all communities. By amplifying the voice of the business community through collaboration and consensus-building, A Better City develops solutions and influences policy in three critical areas: 1. transportation and infrastructure, 2. land use and development, and 3. energy and the environment. A Better City is committed to building an equitable and inclusive future for the region that benefits and uplifts residents, workers, and businesses in Greater Boston.



FOCUS AREAS

Transportation & Infrastructure

Well-managed and funded regional transportation infrastructure is critical to economic vitality and growth. It is a top criteria considered when businesses and skilled workers make location decisions.

Land Use & Development

Strategies for land development, zoning, access, environmental regulations, and transit-oriented development are critical components of an integrated, effective approach to regional growth.

Energy & Environment

Mitigating climate change and incorporating resilience into decision-making ensures lasting and competitive investments. Additionally, a clean, reliable, equitable, and affordable energy supply is essential for enabling long-term economic growth alongside decarbonization

MEMBER COMMUNITY INDUSTRIES

- | | |
|-------------------------|-------------------------|
| Architecture | Legal Services |
| Commercial Real Estate | Non-Profit |
| Construction | Pharmaceutical |
| Consulting | Property Management |
| Consumer Goods | Property Management |
| E-commerce | Public Relations |
| Education | Real Estate Development |
| Engineering | Real Estate Investment |
| Finance | Real Estate Services |
| Health Care & Hospitals | Retail |
| Hospitality & Tourism | Transportation |
| Insurance | Utilities |





WAYS TO ENGAGE

Advisory Committees: Advise, shape, and engage in developing the work plan and policy priorities for each focus area.

Working Groups: Collaborate with a small group of members to provide feedback and devise innovative solutions.

A Better City Conversations: Attend member-only topic-focused briefings to highlight major initiatives, policies, and innovations.

Emerging Leaders: Nominated by board members, networking and professional development related programming for young professionals.

ACTIVITIES & INITIATIVES

- Conduct independent **research and analysis** that drives public-policy initiatives and infrastructure investments
- **Develop consensus** between the public and private sectors to foster the Boston region's economic competitiveness and growth
- **Advocate** for the business community to city and state agencies and legislators
- Engage a broad range of stakeholders to **influence change**
- **Facilitate** joint initiatives among our members to achieve mutual goals and strategic objectives
- **Convene thought leaders** from across the Boston region to educate, connect, and engage

ADDITIONAL PROGRAMMING & INITIATIVES

Transportation Management Associations | Separate Membership

A Better City operates two Transportation Management Associations in the Boston area: A Better City TMA and Allston Brighton TMA. The Transportation Management Associations (TMAs) are non-profit membership organizations made up of employers, institutions, and building working together to advance employee transportation options, improve air quality, and reduce traffic congestion. The TMAs aim to enhance the economic vitality of the areas served by improving mobility and air quality through incentives, programs, events, and advocacy that promotes sustainable commuting.

Greenway Business Improvement District

A Better City led a robust process to develop a detailed plan for the Greenway BID, including boundary lines, a management plan, and a formula for individual contributions. Following the establishment of the Greenway BID, A Better City continues to play a central role in BID operations and acts as a point of contact for abutters, the Greenway Conservancy, and other public and private partners.

Equity in the Built Environment

A Better City strives to build a more equitable, accessible, safe, and inclusive city and region in strategic partnership with our members and the communities that they serve, and in collaboration with our colleague organizations and city and state leaders. Looking ahead, we will endeavor to expand our organization's scope to be representative and inclusive of communities throughout Greater Boston. As we work to shape our region's future, we recognize that Boston's strengths lie in diversity and equitable growth—and the centering of equity in the built environment across our work will help to realize our region's full potential.

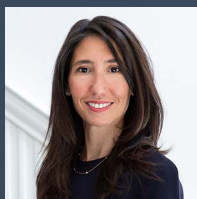
Quarterly meetings of the Board of Directors feature discussions on major issues concerning the business community and focus on A Better City priorities.

A BETTER CITY OFFICERS



James M. Tierney
Chair

New England Market Director
JLL



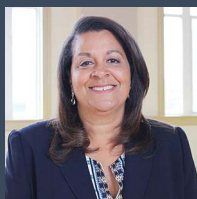
Kim Sherman Stamler
Vice Chair

President
Related Beal



Edward H. Ladd
Treasurer

Chair Emeritus
Mellon Investments Corporation



Jeanne Pinado
Clerk

Executive Vice President
Boston Investment Sales &
Equity Placement
Colliers International

EXECUTIVE COMMITTEE

Kara Buckley

Global Grooming Communications &
Community Affairs Leader
P&G Gillette

Joseph Carroll

Director, Community & Customer
Management MA
National Grid

Donald Chiofaro

President & CEO
The Chiofaro Company

Andrew J. Dankwerth

Senior Vice President, Design &
Development
Pembroke

Lawrence S. DiCara, Esq.

Lawrence S. DiCara, P.C.

John E. Drew

Chair
The Drew Company

Ronald M. Druker

President
The Druker Company

Elizabeth Grob

New England Real Estate Market Leader
VHB

Thomas J. Hynes, Jr.

Co-Chair
Colliers International

Mark R. Johnson

Director of Development
DivcoWest Real Estate Investments

William F.X. Kane

President, East Coast & UK Markets
BioMed Realty

James G. Keefe

Principal
Trinity Financial

Rachel D. Kelly

Partner
PricewaterhouseCoopers LLP

Kevin M. Lemire

Head of Real Estate & General Services
Putnam Investments

Christopher W. Maher

Vice President
Delaware North Companies, Inc

Douglas M. McGarrah, Esq.

Partner, Co-Chair, Real Estate &
Development
Foley Hoag

Michael E. Mooney, Esq.

Chair Emeritus
Nutter

Young K. Park

President
Berkeley Investments, Inc.

David G. Perry

Senior Vice President, Principal
Hines

Yanni Tsipis

Senior Vice President, Fenway & Seaport
Development
WS Development

Dana E. Warren

Vice President Corporate Real Estate
Federal Reserve Bank of Boston

John Wolff

Senior Vice President, Real Estate Market
Executive Commercial Real Estate Banking
Bank of America

BOARD MEMBERS

Joe Albanese

Founder & CEO
Commodore Builders

Allan Ames

President
BR+A CONSULTING ENGINEERS

Dante Angelucci

Senior Vice President, Development
Alexandria Real Estate Equities

Brian Barringer

Director of Commercial Development
Consigli Construction

Christina Becker-Birck

Vice President
Cadmus

Milton Benjamin

President & Founder
KAGE Growth Strategies

Greg Bialecki

Principal
Hilco Redevelopment Partners
Redgate

Robert Biggio

Vice President of Facilities & Support
Services
Boston Medical Center

David Bois

Principal
Arrowstreet

B.K. Boley

Senior Principal
Stantec

Gary Bua

Senior Vice President, Massachusetts
Office Leader
HNTB

John D. Cahill

Vice Chair
O'Neill & Associates

Michael Cantalupa

Chief Development Officer
The Davis Companies

Philip Casey

Principal
CBT

James Cassetta

President & CEO
WORK, Inc.

Daniel C. Cataldo

Chief Administrative Officer
Eaton Vance

Carole Charnow

President & CEO
Boston Children's Museum

Jacob Citrin

CEO
Cargo Ventures

Chris Collins

Transit Lead
Jacobs

Chris Crompton

General Manager
Old Town Trolley of Boston

Brian Dacey

President
Cambridge Innovation Center

Daniel Dain

Chair & President
Dain, Torpy, LeRay, Wiest &
Garner LLP

Geri Denterlein

CEO
Denterlein

Carolyn Desmond

Vice President, Development
Skanska

Michael Donovan

Vice President, Campus Planning &
Operations
Boston University

Rita "Kiki" (Nkiru) Edozie, PhD

Dean, John W. McCormack Graduate
School of Policy
University of Massachusetts Boston

Dan Egan

First Vice President, Investments
Equity Residential

Jose Escobar

Managing Partner Domain Specialists
Verizon

John Fenton

Development Managing
DLJ Real Estate Capital Partners

Gretchen Z. Fisher

Managing Director US Corporate
Real Estate
Manulife Investment Management

David Flanagan

Senior Director Capital Facilities,
Engineering & Research Laboratory
Planning

Beth Israel Deaconess Medical Center

David Friedman

Senior Vice President, Legal &
Government Affairs
Boston Red Sox

Richard Galvin

President & CEO
CV Properties

Steve Gaven

Chief Financial Officer PBWM
Boston Private Bank

Doug Gensler

Managing Director, Principal
Gensler

Wendy Gettleman

Vice President of Facilities Management
& Real Estate
Dana-Farber Cancer Institute

Rosalind Gorin

President
HN Gorin, Inc.

James Goudreau

Head of Environmental Sustainability
External Engagement
Novartis

Dana Griffin

Director, Asset Management,
Development & Construction
Jamestown, L.P.

Taran Grigsby

Global Delivery Lead for Transactions &
Leasing
Fidelity

Matthew Grogan

Director, Front Services
Encore Boston Harbor

Jim Grossmann

Founder & Partner
RISE Construction Management

Peter Hamill

Senior Vice President & Regional
General Manager, New England
Turner Construction Company

Patrick Haswell

Northeast Regional Director
Vicinity Energy

BOARD MEMBERS

Joe Higgins

Vice President for Campus Services & Stewardship
Massachusetts Institute of Technology

Lisa Hogarty

Senior Vice President, Real Estate Planning & Development
Boston Children's Hospital

Justin Holmes

Head of Marketing & Public Policy
Zipcar

Geoff Howell, Esq.

Partner
DLA Piper

Jessica Hughes

Managing Director Regional Director
Tishman Speyer

Douglas Husid, Esq.

Co-Managing Partner
Goulston & Storrs PC

John B. Hynes, III

CEO & Managing Partner
Boston Global Investors, LLC

Nicholas Iselin

General Manager, Development
Lendlease

Steve Juscen

General Manager
Westin Boston Seaport District

Timothy Kelly

Director of Government & Regulatory Affairs
Comcast

Edmund C. Kenealy

Executive Vice President, Chief Public Affairs Officer
Liberty Mutual

Nora Kennedy

Director, External Partnerships
Suffolk

Christine Keville

President & CEO
Keville Enterprises, Inc.

Richard Koch

Chair
Intercontinental Hotel & Residences

Stephen M. LaRose

Partner
Nixon Peabody

Bob Lawler

Vice President & General Manager
Boston Harbor City Cruises

Rebecca A. Lee, Esq.

Member & Chair, Real Estate Development Practice
Mintz

Alexander Leventhal

Managing Partner
Faros Properties

Juan Macias

CEO
AlphaStruxure

Robert E. Maloney

Executive Vice President, Managing Director of Acquisitions
A.W. Perry

David Manfredi

CEO & Founding Principal
Elkus Manfredi Architects

Marc Margulies

Principal, Senior Partner
Margulies Perruzzi

Rick Mattilla

Independent Consultant

William A. McGean

Regional Director, Americas
State Street

Jay McQuaide

Chief Communications & Citizenship Officer
Segment Leader, Municipal & Labor
Blue Cross Blue Shield of Massachusetts

Abe Menzin

Principal, Executive Vice President of Development
Samuels & Associates

Pamela Messenger

President
Friends of Post Office Square

John Messervy

Corporate Director of Design & Construction, Real Estate
Mass General Brigham

Joel S. Mooney

Principal, Senior Vice President
Haley & Aldrich

Thomas N. O'Brien

Managing Partner & CEO
The HYM Investment Group

Charles Pappalardo

Vice President of Global Operations & Real Estate
Vertex

Christopher Peabody

President
Peabody Office

Chad Remis

Executive Vice President, North America
Oxford

Marika Reuling

Managing Director, Allston Initiatives
Harvard University

Dusty Rhodes

President
Conventures

Tim Ritchie

President
Museum of Science

Michael J. Roberts

Senior Vice President of Development
AvalonBay Communities, Inc.

Edward Rocco

General Manager
Boston Marriott Long Wharf

Kelly Saito

Managing Partner
The Green Cities Company

Melissa Schrock

Senior Vice President, Mixed Use Development
Hilco Redevelopment Partners / Redgate

Peter See

Senior Vice President, Property Management
Boston Properties

Gurki Singh

Complex General Manager
The Westin Copley Place

John Slater, Esq.

Partner
Sherin and Lodgen LLP

Alan Smith

General Manager
Marriott International

BOARD MEMBERS

Jerome M. Smith

Head of Community Affairs, New England Region
Amazon

Patrick Sousa

Principal
Marcus Partners

Edward Steinborn

CFO, Sr Managing Director
Wellington Management

Gautam Sundaram

Practice Leader, Principal
Perkins&Will

James Sutherland

Associate Vice President, Public Policy & Advocacy
New England Aquarium

Donald Svoboda

Director Real Estate Investments
MetLife

Brian Swett

Boston Office Leader
Arup

Ryan Taylor

Partner, Real Estate
KPMG

Tom Tilas

Vice President Government Relations
AECOM

Ted Tye

Managing Partner
National Development

Tom Walsh

General Manager
Renaissance Boston Waterfront Hotel

David Wilkinson

Managing Partner
Camber Development

Brent Zeigler

Senior Vice President, Real Estate
Market Executive Commercial Real Estate Banking
Dyer Brown



2022 LEGISLATIVE & POLICY PRIORITIES

Energy & Environment

Ensure consistency & policy alignment across city, state, federal climate & clean energy policies, particularly those relating to the buildings sector—the 2030 Clean Energy & Climate Plan will be released in June & the Better Buildings Act is gaining traction.

Pursue legislative opportunities to advance equitable & innovative climate financing opportunities, including a climate bank

Land Use & Development

Secure formal agreement from the State and City to extend the Greenway BID for another 5 years

Transportation & Infrastructure

Enact transportation Bond Bill that includes:

- Bond authorization to match federal infrastructure funds
- Capital delivery & procurement reforms
- MBTA mandates regarding full-service schedules & means-tested fares
- Advancement of the All At-Grade Option for the I-90 Allston Multimodal Project
- E-bike definition & classification

2022 WORK PLAN OVERVIEW

Energy & Environment

- Ensure climate policies for existing buildings and new construction—including the City of Boston’s BERDO 2.0 regulations and the Commonwealth’s new Specialized Stretch Energy Code—are achievable and implementable
- Serve on the Governor’s Global Warming Solutions Act Implementation Advisory Committee (IAC) to guide the development of the Clean Energy and Climate Plan for 2030
- Develop equitable climate solutions to address extreme heat, including preserving and expanding the urban tree canopy
- Advance equitable workforce development strategies to connect historically excluded students to careers in Building Automation Systems
- Identify opportunities for federal investment in climate mitigation and adaptation projects, including large-scale resilient infrastructure, that leverage public-private partnerships and community-centered investment

Land Use & Development

- Partner with the city and the state to improve the development process, while providing certainty to the real estate community and attracting investment
- Investigate the potential to deploy green infrastructure along the Blue Line corridor in East Boston
- Lead Seaport Leadership Group to address the transportation, public realm, and resiliency needs of the South Boston Waterfront
- Support smart development strategies, including Chapter 91 regulations, Municipal Harbor Plan updates, and Transit Oriented Development
- Spearhead the renewal of the Greenway Business Improvement District (BID) for another 5 years

Transportation & Infrastructure

- Advance MBTA service restoration, enhancement, safety, and equitable access
- Finalize design and secure funding for the I-90 Allston Multimodal Project, including through the release a regional economic benefits study and shared Neighborhood Connector Plan
- Support the decarbonization of the transportation sector
- Deploy new tools to grow Transportation Management Associations (TMAs), encouraging more sustainable commuting and bringing riders back to the T
- Support the smart investment of unprecedented federal funding at the city, regional, and state level

DUES STRUCTURE

A Better City has a competitive membership dues structure that is on a sliding scale based on the prospective member’s company size, portfolio, and scope of work. Membership dues are invoiced once a year and include all engagement opportunities outlined in this brochure. To inquire about membership rates, please email Turner Skenderian at tskenderian@abettercity.org.



JOIN US TODAY!

WWW.ABETTERCITY.ORG

We invite business leaders who are interested in becoming fully engaged as members of A Better City to contact Turner Skenderian at tskenderian@abettercity.org